

We build better solutions



HMI Elements is an HMI specialist with 30 years experience and a reputation for innovation, reliability and excellence. As a key supplier to oil and gas industries worldwide, our Zone 1 and Zone 2 ATEX, IECEx and AEx compliant HMIs are field-tested and proven to perform in the harshest conditions.



PC/Monitor/terminal - ATEX & EAC



Model
800-Z1 15" | 900-Z1 19"
**Extremely Rugged
Hazardous Area ATEX
Zone 1 15" or 19" display**

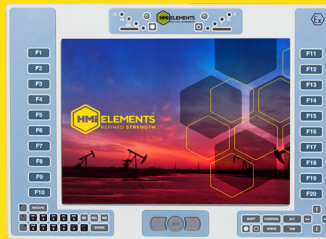
- Simple to install
- Range of mounting options
- High Bright screen
- IP66 (on all four sides)
- Touch screen*
- Wide temperature range
- Integrated universal AC or DC power supply
- Custom configuration

* Not available on 800-Z1 terminals



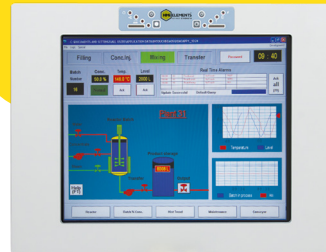
Monitor

- Accepts DVI, VGA or
- Composite video



Full PC/ Workstation

- Intel i7 Processor, COM express with TPM
- Windows 10 & 7 Pro
- Touch screen
- WiFi
- On board health monitor



KVM/Terminal

- Fiber range 10,000 meters; CAT5 300 meters; DVI/digital KVM 140 meters
- Touch screen (900-Z1 only), Keypad / integrated mouse or full qwerty keyboard (other language available)



Accessories

Safe Area op-is Fiber Media Converter



- Fiber IS outputs certified ATEX, IECEx, AEx
- Lightweight at only 4.4lbs with a depth of 9.1"
- Two 'Ex op is' fiber ports - inherently safe to IEC 60079-28:2015
- Functions as un-managed Ethernet switch both fiber and copper ports
- Can be daisy chained for multiple fiber and copper connections
- No configuration is necessary

Wireless Access Point – ATEX, IECEx, AEx



- Ingress: IP66 all sides
- Suitable for Zone 1 and Zone 2
- Can be used as access point or bridge
- Fully configurable to meet statutory Wi-Fi requirements worldwide
- Cost effective method of extending Wi-Fi networks into the hazardous area

United Kingdom

HMI Elements Ltd
Unit A & B, Windmill Industrial Estate,
Showfield Lane, Malton, UK, YO17 6BT
T +44 (0) 1653 699 908

United States

HMI Elements Inc
10900 Brittmoore Park Drive, Suite I,
Houston, TX 77041, USA
T +1 (0) 281 674-7815

hmielements.com

DOC-BRO-006-Rev 2.0

